
TROPICAL FOREST LANDSCAPES

Conservation,
Restoration &
Sustainable Use

An online certificate program offered by:

Yale SCHOOL OF
THE ENVIRONMENT



Environmental
Leadership &
Training Initiative



THE PROGRAM

Advance your career and achieve results for conservation and livelihoods from anywhere in the world

Conserving and restoring the planet's tropical forest landscapes is critical for addressing many of our pressing environmental and social challenges. **Conservation** and **restoration** offer many opportunities to combat climate change, improve ecosystems, protect wildlife, and contribute to regional food security and economic growth.

This one-year certificate offered by the Yale School of the Environment (YSE) and Yale's Environmental Leadership & Training Initiative (ELTI) explores diverse perspectives on managing tropical landscapes in a dynamic online experience. Courses cover important core concepts, highlight exciting global case studies, and illustrate practical tools for understanding and managing social, ecological, and economic aspects of effective conservation and restoration initiatives.

Participants leave the program with connections to a global network of professionals, in-depth exposure to scientific knowledge and practical skills, and a concrete project plan that supports conservation and restoration actions.



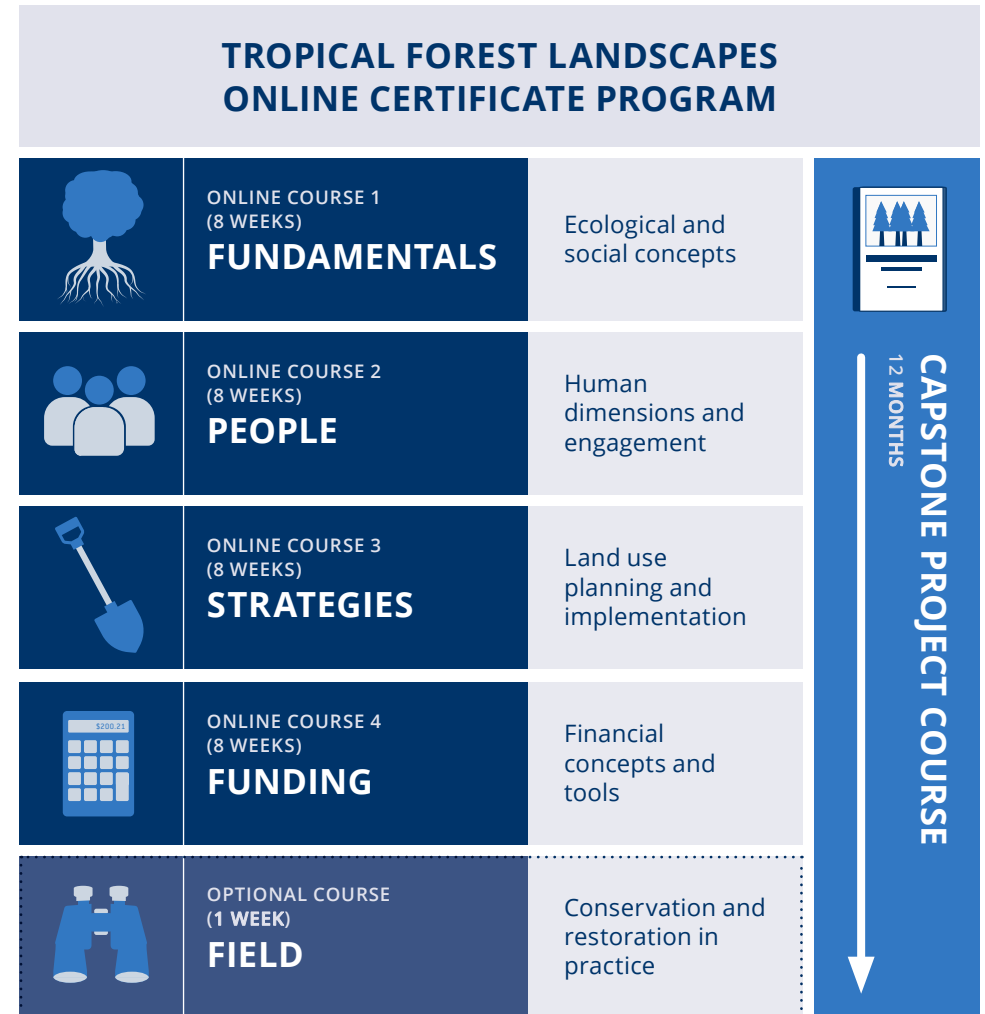
CURRICULUM

Learn cutting-edge science and applied experience from Yale faculty and global experts

Our diverse team of instructors and contributors showcase scientific theory and practice, highlighting experiences and perspectives from around the world.

THIS PROGRAM INCLUDES

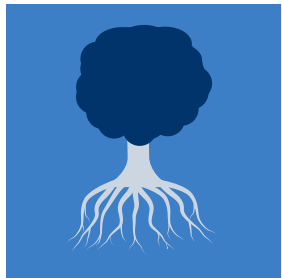
- **Four core courses (8 weeks each):** Dive deep into four core themes and build an interdisciplinary understanding of tropical forest landscape management.
- **Capstone project course (12 months):** Learn tools for project planning and put learning into practice as you develop an implementable project plan.
- **Optional field course (1 week):** Experience concepts coming to life on-the-ground through an experiential tour of a tropical forest landscape.



COURSES

FUNDAMENTALS: Ecological and social concepts

Build a foundation in important ecological and social concepts. Explore the importance of tropical forests, develop an understanding of global processes and drivers, and begin planning your own project.



WEEK 1

Motivations
for conservation
and restoration

WEEK 2

Tropical forests
and forest
ecology

WEEK 3

Ecological
resilience and
recovery

WEEK 4

Forest
disturbance and
regeneration

WEEK 5

People in
the landscape

WEEK 6

Knowledge
systems and
perspectives

WEEK 7

Global
forest policy and
governance

WEEK 8

Climate
change and
carbon

PEOPLE: Human dimensions and engagement

Learn about the complex socio-economic and political factors that drive actions and decisions of stakeholders in forest landscapes. Evaluate your own social context, while considering how to avoid adverse social outcomes for projects.



WEEK 1

Framing
problems &
interventions

WEEK 2

Stakeholder
& community
heterogeneity

WEEK 3

The state &
other powerful
actors

WEEK 4

Property rights
& land tenure

WEEK 5

Community
conservation &
restoration

WEEK 6

Social justice
& Indigenous
peoples

WEEK 7

Integrating
livelihoods &
human well-
being

WEEK 8

Processes &
incentives for
engagement

COURSES

STRATEGIES: Land use planning and implementation

Develop the skills to assess and plan on-the-ground conservation and restoration activities. Integrate what you learn about social and biophysical considerations to create effective locally adapted strategies.



WEEK 1

Landscape approaches to planning

WEEK 2

Species conservation and landscape ecology

WEEK 3

Restoration strategies: passive to active

WEEK 4

Sustainable forest management

WEEK 5

Agroforestry and on-farm restoration

WEEK 6

Soils, water and other ecosystem services

WEEK 7

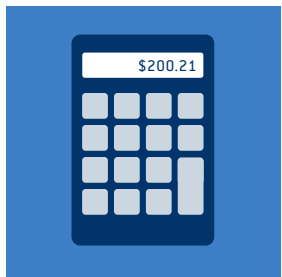
Climate change mitigation and adaptation

WEEK 8

Monitoring conservation and restoration

FUNDING: Financial concepts and tools

Learn where funding for conservation and restoration comes from and how to match your project with financial support. Develop a project budget and funding plan while exploring the world of conservation finance.



WEEK 1

Possible sources of funding: key characteristics

WEEK 2

How much funding do you need?

WEEK 3

Attracting gifts from charitable sources

WEEK 4

Qualifying for public grant funding

WEEK 5

Financial concepts 101

WEEK 6

Generating cash flows from the land

WEEK 7

Attracting private, for-profit investment

WEEK 8

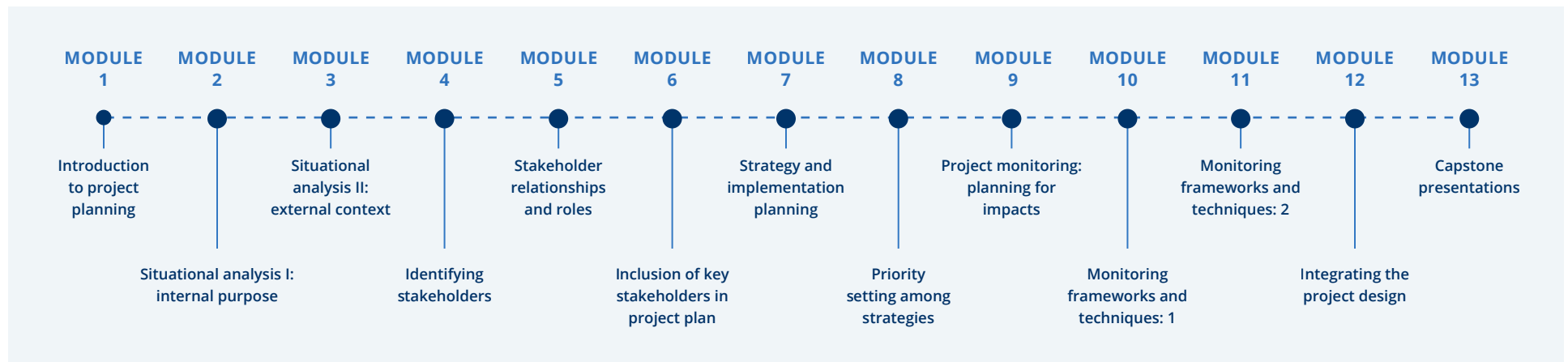
Possible futures and course wrap-up

COURSES



CAPSTONE: Design a conservation or restoration project

Develop a suite of tools to apply to a real-world project in the yearlong Capstone course. Learn underlying principles of project planning, practice techniques, and apply concepts to the project of your choice.



FIELD: Conservation, restoration, and sustainable use in practice (OPTIONAL)

Immerse yourself for one week in a tropical forest landscape during the optional field course. Visit demonstration sites, meet environmental leaders, and practice the skills you learned during the online courses. The field course will take place at an ELTI training landscape in Panama, Philippines, Indonesia, Colombia, or Brazil.

PARTICIPANT EXPERIENCE

Learn something new every week

Each weeklong module offers a chance to explore new concepts, tools, and perspectives about sustainably managing tropical forest landscapes.



CONTENT: Learn through video lectures, case studies of restoration and conservation in practice, and a rich library of additional resources for in-depth learning.



APPLICATION: Practice skills and apply knowledge through weekly reflections, skill-building assignments, and an implementable project — all with feedback from experts.



EXCHANGE: Develop a network and community of practice with instructors and peers during weekly live sessions and discussion forums.

Study online at a time and place that works for you

At 5–6 hours per week, the program is made to fit into your schedule.

Weekly Workload

2 hours watching lectures

2 hours working on assignments

1.5 hours in live sessions

All required coursework is online, meaning you can study from anywhere in the world, at your own pace.



Get hands-on restoration experience in the field

Participants have the option to join a one-week field course at an ELTI site in the tropics.

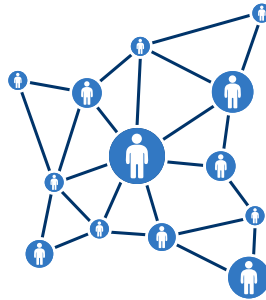
The field course includes site visits, interaction with local stakeholders, and field exercises to link what you learned online to a real-life context.

BENEFITS



Gain in-depth knowledge

Learn science and practice from an interdisciplinary perspective



Access a global network

Connect with experts and build relationships with a global community of learners



Develop practical skills

Put concepts into action through guided assignments and project work



Receive personalized support

Stay on track and reach your learning goals with support from dedicated program mentors



Choose your own schedule

Study at a time and place that works for you



Showcase your accomplishments

Receive a digital certificate from the Yale School of the Environment

Who should apply?

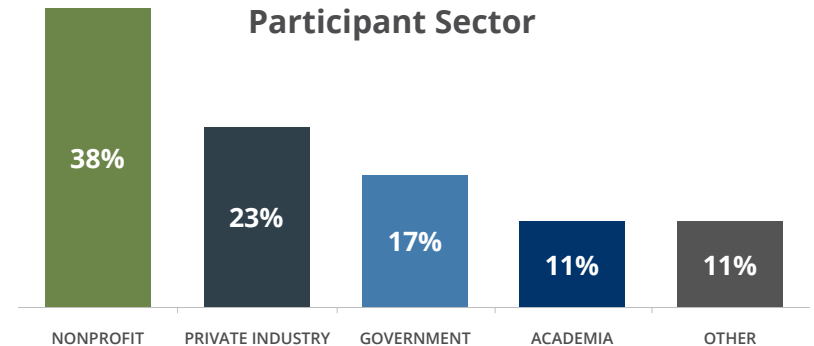
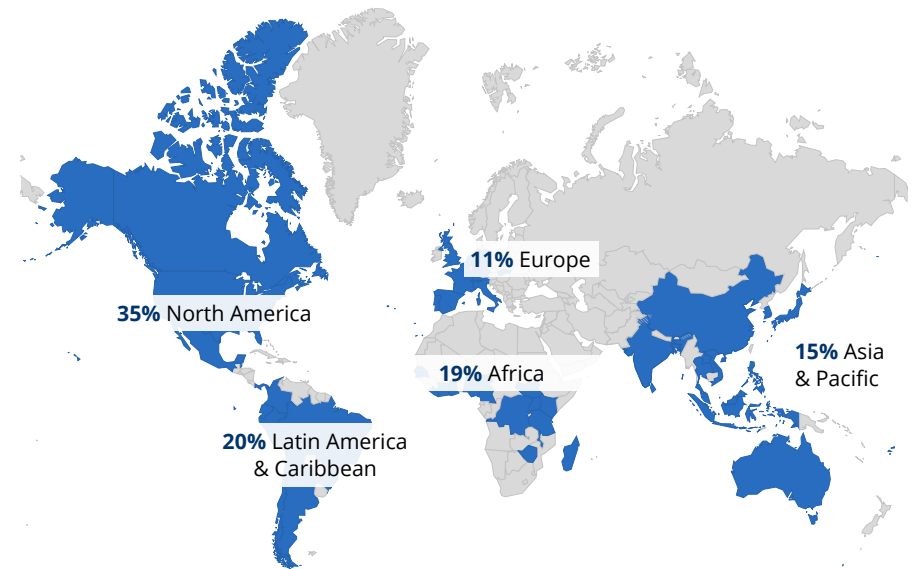
The Tropical Forest Landscapes program is tailored to individuals from a wide range of backgrounds and interests, including:

- 1 People working for governments, NGOs, aid agencies, foundations, businesses, extension agencies, academia and elsewhere who want to enhance their knowledge, credentials, and leadership capacity
- 2 Graduate students and recent graduates looking to complement their education
- 3 Landowners, farmers, ranchers, and community organizers looking to implement innovative and sustainable land-use practices
- 4 Anyone interested in learning about tropical forest landscapes and how to do restoration and conservation

This program will help participants:

- Learn new skillsets and update existing ones
- Expand their professional network
- Gain a competitive advantage in the job market or change careers
- Start or improve a professional or personal project

Where do participants come from?



PROGRAM RESULTS

100%

of graduates to date say they
have met their goals for enrolling
in the program.

HOW GRADUATES PUT WHAT THEY LEARNED INTO ACTION

- Planned initiatives at the landscape level
- Implemented new practices
- Developed a comprehensive monitoring framework
- Created a funding proposal
- Thought holistically and critically about conservation
- Developed participatory approaches to stakeholder engagement
- Recognized bias and critical issues of social justice
- Began a new career in conservation



Anazelia Tedesco
The University of Queensland

"This program allowed me to integrate a solid knowledge base and practical experience with the most current solutions, challenges, and best practices in conservation and restoration."



Zipora Otieno
FAO Regional Office for Africa

"Within a very short time, I have been able to build, expand and leverage my professional networks through interactions with other course participants."



Wesley Snell
Conserve Natural Forests

"The integration of knowledge has dramatically improved the clarity, organization, and precision of my work restoring tropical dry forests in Thailand."

HOW TO APPLY

Application

TO APPLY, YOU MUST SUBMIT

- ☐ Online application form
- ☐ Resume
- ☐ One personal statement and two short-response statements
- ☐ Scanned or electronic transcript that shows completion of a four-year bachelor's degree or equivalent
- ☐ One professional reference

OPTIONAL MATERIALS

- ☐ Documentation of coursework additional to a four-year bachelor's degree or equivalent
- ☐ Official TOEFL or IELTS test score reports

For detailed information and to start your application visit
<https://tropicalrestorationcertificate.yale.edu/admissions>

Eligibility Requirements

- Proficiency in written and spoken English
- Bachelor's degree or equivalent from an accredited institution of higher education
- Reliable access to the [technology needed](#)

Cost

Tuition: \$6,000

Optional field course: \$2,000

Partial scholarships are available on a competitive basis. For consideration, please complete a scholarship application while submitting your application.

Organizational and group discounts are also available. Contact tropicalcertificate@yale.edu for more information.



ABOUT

Yale University

Yale University has a long history of excellence. You will gain access to experts, training materials and networks of the:

Yale School of the Environment

The **Yale School of the Environment (YSE)** has been at the forefront of bringing science to solutions for over 100 years. We are known for innovative scholarship, practice, and impactful engagement that advance solutions for complex natural resource and environmental challenges. Our mission is to lead the world toward a sustainable future with cutting-edge research, teaching and public engagement on society's evolving and urgent environmental challenges. Our graduates go on to become nationally and internationally recognized environmental leaders.

Environmental Leadership & Training Initiative

The **Environmental Leadership & Training Initiative** at Yale University (ELTI) is a global reference for practical training on tropical conservation and restoration. Our online and field courses integrate the science of YSE with the applied expertise of ELTI's global network of partners. Our mission is to empower people from all sectors and backgrounds to restore and conserve tropical forest landscapes using strategies that support biodiversity and livelihoods. ELTI alumni become innovative leaders who achieve tangible results for people and the environment.

ELTI was created with generous funding from Arcadia, a charitable fund of Lisbet Rausing and Peter Baldwin www.arcadiafund.org.uk

tropicalrestorationcertificate.yale.edu

f [YaleTropicalCertificate](#)

🐦 [YaleTropicCert](#)

tropicalcertificate@yale.edu

@ [YaleTropicalCertificate](#)

